



Comfort for everyone

Hofaplat Standard Natur

Wood fibre boards according to EN 13 171

Smrečina Standard softboards have already been produced for more than 50 years and they represent a key product of the production range. In wooden constructions has been traditionally preferred the usage of the insulating boards made of soft wood-fibres with a density about 230 kg/m³. At the beginning, the boards were placed into hollow wall constructions. During building restoration boards produced more than 50 years ago have not yet shown any signs of ageing.

Hofaplat Standard Natur 1 - without surface finish

Hofaplat Standard Natur 2 - ivory faced - during production, the second finer layer of wood fibres is poured onto the first layer. This poured material sorted from selected raw materials is used especially for boards applicable in interiors. Reduced diffusion of the contained substances prevents substantial formation of stains during later plastering or wallpapering. Glue, plaster or paint applied on the boards do not penetrate into the base.

Hofaplat Standard Natur hydrophobic - improved water resistance



izolujite drevom
dämmen mit Holz
insulate with wood
l'isolation par le bois
isolare con il legno

HOFATEX[®]

H O F A T E X
Cesta k Smrečine 5
975 45 Banská Bystrica
S L O V A K I A
www.hofatex.eu

Hofaplat Standard Natur

Produced according to EN 13171, EN 622
Usage according to DIN 4108-4

Utilisation:

- Thermal insulation
- Summer heat protection
- Air sound insulation
- Impact sound insulation

Designed for insulation:

- New buildings
- Rebuilds
- Renovations

Technically reliable, nature product
with easy and long term approved
laying experiences.

Rational processing with a proven track record

Quality control:

- LGA Nürnberg
- CSI Praha - Zlín

Renewable raw material, ecologic
building material.

Construction - ecological impact:

- Institut für Baubiologie und Ökologie,
Neubeuern

Your dealer:

CE

NFB
Natural FiberBoard

Hofaplat Standard Natur

Application

- Thermal and sound insulation
- Insulation from inside
- Underlayer for different types of floor
- Pinboards, diplays
- Office partition, sound - deadening core for doors,
- Packing material
- Variety of structural uses

More over with hydrofobization

- External sheathing in timber constructions
- Protective boarding during concreting of wall and ceiling (inside)

Storage instructions

- Store in dry place
- Cut with insulation knife or hand circular saw (with exhaust)
- Avoid cross cuts

Except for their use in timber constructions, the boards are very often used as blank shuttering during the making of concrete ceilings. The preferred use of the blunt-edged boards was and also is in interior areas.

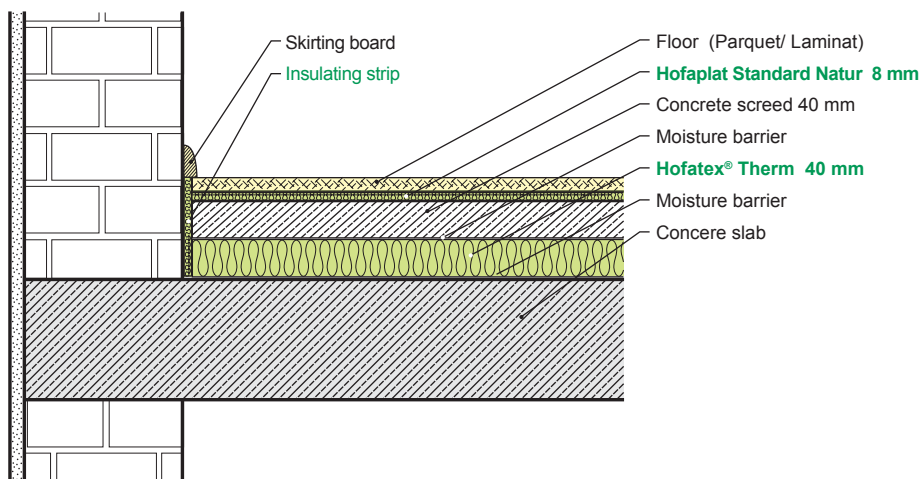
Following our product development in the nineties we met the increasing demand for special solutions for usage in thermal insulation and sound deadening -developing the production series Hofatex® Therm and Hofafest UD - our standard boards which are also produced for special purposes.

Standard boards are used specially as coverings of poured straightening materials, backing insulation of cast asphalt coating and as blank shuttering during making of concrete ceilings. Industrial use is also possible for broad range of uses.

On the basis of high compression strength, the boards are used wherever high point loads are to be transferred, e.g. under floor constructions where thermal insulation, air and impact sound insulation must be kept.

However, standard boards are still used, particularly in wooden constructions. Special system constructions and timber frame constructions use large-surface boards for the standard production of prefabricated wall elements as sheathings opened for diffusion.

Floated floor on Hofaplat Standard Natur



Information as of July 2009 - Technical data and details are subject to change



Hofaplat Standard Natur

Technical data

Produced according to EN 13171, EN 622
Usage according to DIN 4108-4

Thermal conductivity - declared
 $\lambda_D = 0,046 \text{ W/m.K}$

Vapour diffusion factor
 $\mu = 5$

Specific thermal capacity
2 100 J/kgK

Fire reaction class according to EN 13501-1
E

Building material class according to DIN 4102
B2

Density
230 kg/m³

Tensile strength
 $\geq 30 \text{ kPa}$

Compression strength
 $\geq 100 \text{ kPa}$

Format in mm
1220 x 2440

Thickness in mm

Hofaplat Standard natur 1
8, 10, 12, 15, 19

Hofaplat Standard natur 2
8, 10, 12, 15

Hofaplat Standard Natur hydrophobic
8, 10, 12, 15, 19

Special formats upon request

Wood-fiber insulation must be stored horizontally, kept dry and protected from mechanical damage.

isolare con il legno

l'isolation par le bois

insulate with wood

dämmen mit Holz

izolujte drevom

HOFATEX
insulate with wood