



Hofatex® Therm NK

Wood fibre boards according to EN 13171, EN 622

By reason of partly very high square weights in constructions and additional loads, flooring constructions require the designs which might be loaded by compressioning relevant way. At the same time physical requirements such as thermal, air and impact sound insulation must be fulfilled.

Insulating panels Hofatex® Therm NK can be loaded with very high compression. They are suitable both for under plank floors and for under screedings. They are also recommended for their thermal and sound insulation features.

Insulating panels Hofatex® Therm NK used for new constructions, rebuilds or renovations are suitable not only in floor systems but also as additional thermal insulation under the rafters in pitched roofs or in exterior walls (timber frame). The panels are nailed down or mounted by screws directly on rafters or timber frame. Homogenous insulating layer without gaps can be created. It provides protection against cold and also excellent heat protection in summer, especially if the existing insulation between rafters is done from light insulation materials (e.g. mineral wool).



izolujte drevom

dämmen mit Holz

insulate with wood

l'isolation par le bois

isolare con il legno



HOFATEX®

H O F A T E X
Cesta k Smrečine 5
975 45 Banská Bystrica
S L O V A K I A
www.hofatex.eu

Hofatex® Therm NK

Produced according to EN 13171, EN 622
Usage according to DIN 4108-4

Tongue and groove.

Subfloor for plank floor with laying strips.

Insulation power in various areas:

- Sound impact insulation
- Air sound insulation
- Thermal insulation

Insulations for:

- New constructions
- Rebuilds
- Betterments

Usable in:

- Plank floors
- Wet and dry screedings

Hofatex® Therm NK is stable in from and compression resistant.

Wood construction as well as massive constructions.

Technically reliable, nature product with easy and long term approved laying experiences

Rational processing with a proven track record

Quality control:

- LGA Nürnberg
- CSI Praha - Zlín

Renewable raw material, ecologic building material

Construction - ecological impact:

- Institut für Baubiologie und Ökologie, Neubeuern

Your dealer:



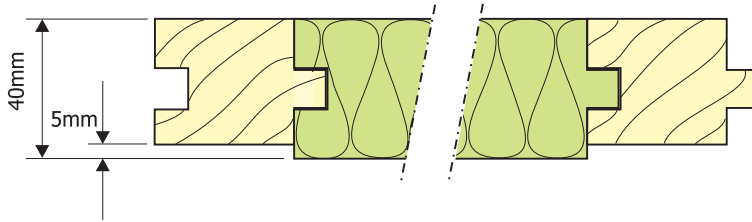
NFB
Natural FiberBoard

Hofatex® Therm NK

Application

Hofatex Therm® NK matches with good compression strength and therefore Hofatex Therm® NK panels are suitable for laying under cement screedings and under dry screedings constructions.

Hofatex Therm® NK offers in connection with laying strips very good construction system for timber plank floor, characterized by fast laying and elimination of acoustical bridges.



Laying strips NK are 5 mm thinner than Hofatex® Therm NK, what avoids contact of bearing system with floor base plate. Plank floor distributes loading and is safely laid as floating layer on the insulation panels Hofatex® Therm NK.

It is recommended to use under the Hofatex® Therm NK a floating layer of Hofaplat Standard Natur 1. This construction assures the best impact sound insulation along with high walking comfort. Laying strips are finger jointed. It means the absolute fitting accuracy and also high resistance against their twisting and warping.

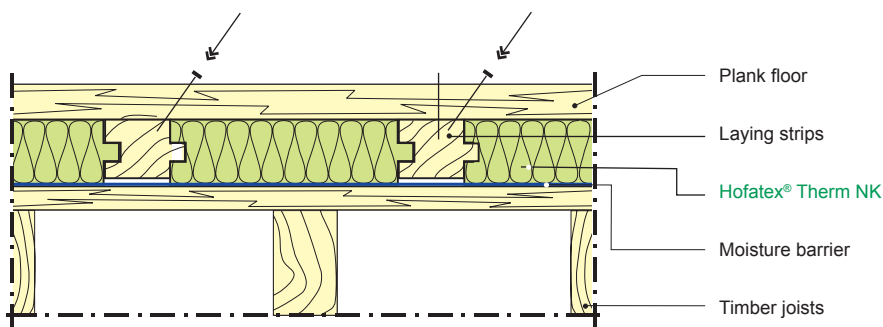
Floating floor with wet screeding

The insulation boards Hofatex® Therm NK can be laid on underlay construction without laying wood strips. In this case are the boards laid on concrete ceiling and protected against air moisture with moisture barrier. Also between the wet screeding and the boards it is necessary to lay a layer of moisture barrier. The minimum thickness of wet screeding should be aprx. 40 mm. The transmission of impact sound thru neighbouring walls must be eliminated a because that, it is important to use an insulating strip around of the floor.

Floating floor with light dry screeding

By using under dry screedings it si also necessary to make the same arrangements as by wet screedings. In this case the moisture barrier between dry screeding and the boards is not needed. The dry screeding (spread footing) can be made from wood chips board, OSB, gypsum boards. These are laid directly on the Hofatex® Therm NK boards.

Plank floor - Hofatex® Therm NK with laying strips



Hofatex® Therm NK

Technical data

Produced according to EN 13171, EN 622
Usage according to DIN 4108-4

Thermal conductivity - declared
 $\lambda_D = 0,039 \text{ W/m.K}$

Vapour diffusion factor
 $\mu = 5$

Specific thermal capacity
2 100 J/kgK

Fire reaction class according to EN 13501-1
E

Building material class according to DIN 4102
B2

Density
150 kg/m³

Specific flow resistance
 $\geq 5 \text{ kNs/m}^2$

Water absorption
 $\leq 2 \text{ kg/m}^2$

Tensile strength
 $\geq 5 \text{ kPa}$

Compression strength
 $\geq 20 \text{ kPa}$

Format without tongue in mm
590 x 1180

Format with tongue in mm
600 x 1190

Thickness in mm
40

Laying strips
Finder jointed/massive spruce

Dimensions in mm
35 x 50 x 2000

Wood-fiber insulation must be stored horizontally, kept dry and protected from mechanical damage.

isolare con il legno

l'isolation par le bois

insulate with wood

dämmen mit Holz

izolujte drevom

HOFATEX®
insulate with wood